

BLOCK 5
THE COMMONS
FILING NO. 5

PUBLIC SERVICE
COMPANY OF COLORADO
STEAM PLANT

19th STREET

WEWATTA STREET

POINT OF
BEGINNING

R=325.00' L=3.00'
 $\Delta=00^{\circ}31'40''$
(CH=N47°28'00"E, 3.00')

R=325.00' L=15.00'
 $\Delta=02^{\circ}38'40''$
(CH=S45°52'50"W, 15.00')

ORANGE
PLASTIC CAP
LS 15606

BASIS OF BEARINGS
NORTHWEST LINE DUS
(S44°33'29"W 93.64')

67.85'

N42°16'06"W
4.00'

ORANGE
PLASTIC CAP
LS 15606

S42°47'50"E
4.00'

R=329.00' L=3.04'
 $\Delta=00^{\circ}31'40''$
(CH=S47°28'00"W, 3.04')

N63°24'13"W
569.85'

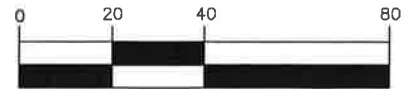
VACATED
19th STREET

DENVER UNION STATION
(DUS)

PLAT BOOK 74 PAGES 016-018

POINT OF
COMMENCEMENT
(SOUTHEAST CORNER
OF SECTION 28)

NOTE:
THIS EXHIBIT DOES NOT REPRESENT A
MONUMENTED LAND SURVEY. IT IS INTENDED ONLY
TO DEPICT THE ATTACHED LEGAL DESCRIPTION.



1 inch = 40 ft.

68W
SIXTY EIGHT WEST

1860 Blake St., Suite 200
Denver, Colorado 80202
PHONE (303) 295-6806
FAX (303) 295-6807

DUS METROPOLITAN DISTRICT 1

Union Station Neighborhood Company

FILE PATH: S:\Projects\20USN01\LDD-USN01\dwg\Metro District\Version 4 December 2011\District 1-V4.dwg

DWG NO.

PROJECT NO. 20USN01 01

DATE: 12/06/2011

DWN: MWL

CHK: AHB